



AES

Energy Storage System



AES LiFePO₄ 7.4 kWh 48 V

AES LiFePO₄ 3.0 kWh 48 V

A powerful lithium energy storage system for residential off-grid solar and whole home backup power.

48V

⚡ PARALLEL POWER

- Up To 96 kWh (per LYNK)
- Linear Scaling of Charge, Discharge, Peak Capacity

⚡ SURGE POWER

- Peak Power for Off-grid Inverter Surge
- Up to 3C Peak Power
- Up to 1C continuous discharge

🔗 DYNAMIC PERFORMANCE

- Up to 40% Faster Closed-loop Charging
- Real-Time Optimization of the Charge Rate

🛡️ HIGH CURRENT BMS

- Field Serviceable BMS and Fuse Protection
- High Peak Surge, Continuous Current
- Sets Charge Voltage, broadcasts SoC and Temperature, Balances Cells

⚡ CHARGES FASTER

- 1C Continuous Charge Rate, Regardless of SoC
- 5x Faster than Lead-Acid
- 2x Faster than C/2 Rated Lithium Batteries

🕒 LASTS LONGER

- 10x the Life of Lead-Acid (BCI-06)
- 10-Year Workmanship Warranty, plus an Energy Performance Guarantee

🕒 RUNS LONGER

- 2x Runtime of Lead-Acid
- Up to 100% Usable Capacity
- Up to 100% Depth of Discharge

💰 HIGH EFFICIENCY

- Up to 50% More Energy Efficient Than Lead-Acid
- Up to 98% Round Trip Efficiency



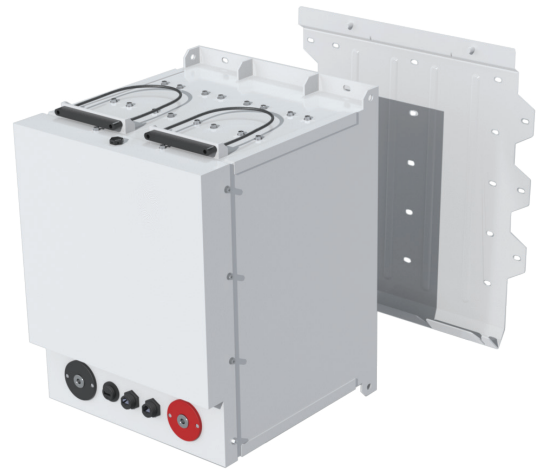


AES LiFePO₄ ESS is for residential off-grid solar and whole home backup power.

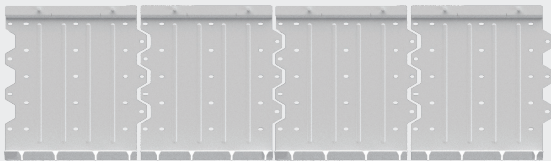
	42-48-6650	44-48-3000
Dimensions	18.5 x 13.7 x 14.7 in	13.0 x 13.3 x 10.1 in
L x W x H	470 x 348 x 373 mm	330 x 339 x 256 mm
Weight	87.0 kg / 192.0 lb	40.0 kg / 88.0 lb
Nominal Energy	7.39 kWh	3.0 kWh
Usable DoD%	90 %	100 %
Rated Capacity (1Hr)	6.65 kWh (130 Ah)	2.9 kWh (57 Ah)
Voltage	51.2 VDC	51.2 VDC
Continuous Charge Current	130 A	57 A
Peak Discharge (3 sec)	300 A RMS	219 A RMS
Warranty	10 years, or 38 MWh	10 years, or 16 MWh
Regulatory	UL 1973, UN 38.3 DOT	UL 1973, UN 38.3 DOT

WALL MOUNTING BRACKET

Discover AES LiFePO₄ batteries can be installed on the floor or in racking as well as with a wall mount bracket that has been designed for the 48V AES LiFePO₄ batteries.



EASY WALL MOUNT CONFIGURATIONS



LYNK II GATEWAY

ADVANCED INTEGRATION – FASTER CHARGING

Unlock the full potential of an AES LiFePO₄ ESS by enabling the BMS to optimize and dynamically manage the charging configurations of hybrid inverter-chargers - Schneider, Victron, Sol-Ark, SMA, Studer. Learn more online.

AES LiFePO₄: 42-48-6650, 44-48-3000, 44-24-2800



#7 -13511 Crestwood Place, Richmond, BC, V6V 2E9, Canada



+ 1.778.776.3288



info@discoverlithium.com

discoverlithium.com